

Police & Crime Plan

Progress Report to the Police & Crime Panel

April - August 2025



Cheshire
Police & Crime
Commissioner



Priorities 2024-28

Reduce crime | Prevention and intervention, ensuring the public has an accessible and responsive police service

Listen to the public | Locally informed policing priorities. Support for victims and survivors of crime

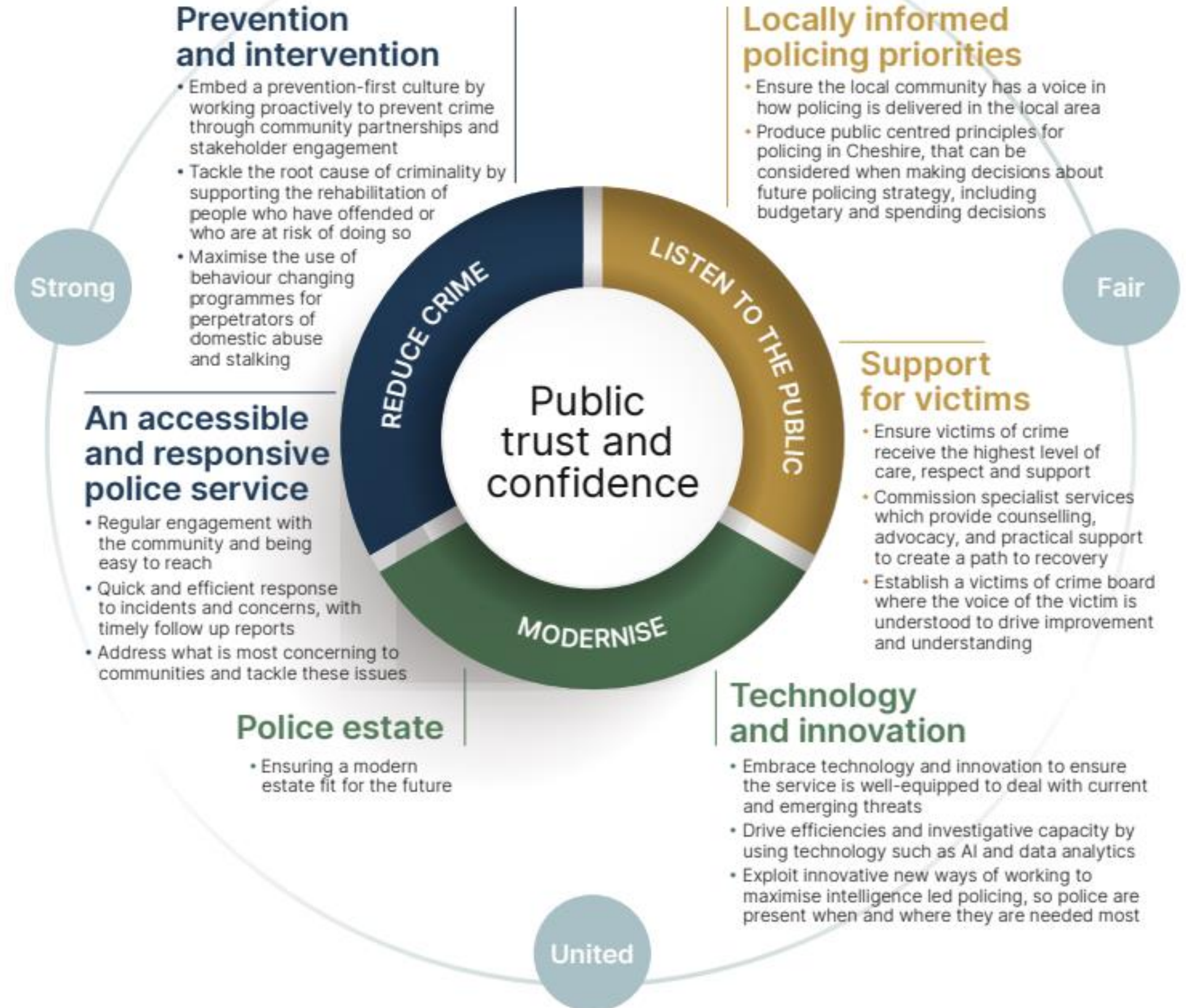
Modernise | Tech and innovation to power a fit for purpose policing estate



Cheshire
Police & Crime
Commissioner



Plan on a Page



Reduce crime

Scrutiny & performance

Quick and efficient response to incidents and concerns, with timely follow up reports



Quarterly performance reviews

Publicly accessible and recorded meetings held throughout the year

Deep dive sessions including neighbourhood policing, support for victims, violence against Women & Girls and custody

Performance data [here](#)

My questions [here](#)



Cheshire
Police & Crime
Commissioner



Reduce crime

Focus on prevention

Embed a prevention-first culture by working proactively to prevent crime through community partnerships and stakeholder engagement	✓
Tackle the root cause of criminality by supporting the rehabilitation of people who have offended or who are at risk of doing so	✓
Maximise the use of behaviour changing programmes for perpetrators of domestic abuse and stalking	✓

DA Pilot Halton

Sports plus activity for at-risk children

Pilot of Arts interventions

Ex-offenders into employment

Community Payback plus

Safer Streets Summer 2025



Listen to the public

Support for victims

Victim Support Services (2024/25):

- Cheshire CARES: 21,341 referrals; 20,865 supported.
- RASASC: 2,209 new referrals; 3,027 supported.
- Remedi Restorative Justice: 576 referrals; 289 supported.
- Remedi Hate Crime: 2,121 referrals; 1,029 supported.
- 2Wish (Bereavement): 35 death referrals; 162 individuals supported.

Ensure victims of crime receive the highest level of care, respect and support	✓
Commission specialist services which provide counselling, advocacy, and practical support to create a path to recovery	✓
Establish a victims of crime board where the voice of the victim is understood to drive improvement and understanding	✓



Cheshire
Police & Crime
Commissioner



Listen to the public

Support for victims (cont)

Working with the Local Criminal Justice Board, developing a meaningful way to learn from people with lived experience, by creating a Victims of Crime Board – anticipated in the next six months.

Thematic scrutiny session focused solely on support for victims. *Read the report here*
Victim Needs Assessment for victims of sexual abuse, used for sourcing service provision.

Launched the SWAP Fund to support victims and prevent crime using money seized from criminals.

Partnered with Savera UK to provide specialist support for victims of honour-based abuse, FGM, and forced marriage.



Cheshire
Police & Crime
Commissioner



Listen to the public

Citizens' assemblies

Ensure the local community has a voice in how policing is delivered in the local area



Produce public centred principles for policing in Cheshire, that can be considered when making decisions about future policing strategy, including budgetary and spending decisions



My plan:

Nine areas

Multiple sessions

Fully representative

Expert speakers

Debate & discussion



Cheshire
Police & Crime
Commissioner

- Crewe, Runcorn, & Widnes assemblies delivered.
- Macclesfield planned for Sep/Oct
- Award-winning
- First PCC to host such events

Listen to the public

Engagement

Regular engagement with the community and being easy to reach



Address what is most concerning to communities and tackle these issues



My interactive engagement map [here](#).

Additional engagements include:

- A multi-faith at Chester Cathedral in June 2025
- A community clean up day in Orford with 10 asylum seekers
- Community walkabouts in Crewe and Runcorn



Cheshire
Police & Crime
Commissioner



Modernise

Technology

Embrace technology and innovation to ensure the service is well-equipped to deal with current and emerging threats



Drive efficiencies and investigative capacity by using technology such as AI and data analytics



Exploit innovative new ways of working to maximise intelligence led policing, so police are present when and where they are needed most



Developing a joint IT strategy with the Constabulary to challenge long-standing approaches and encourage more agile, digital-first practices.

Funding for an AI tool that improves stalking identification during a victims initial Police contact.

Looking to explore wider use of drones to tackle issues impacting on our communities such as anti-social behaviour and e-bikes



**Cheshire
Police & Crime
Commissioner**



Modernise

A modern police estate

Ensuring a modern estate fit for the future



Wilmslow police station opened and is set to become one of the most energy-efficient and sustainable police buildings in the UK.

- Up to 90% reduction in energy consumption compared to conventional buildings.
- A strong statement to maintaining a visible and effective police presence in Wilmslow and surrounding areas.

Planning permission granted for an out-of-town deployment base in Crewe.

- Construction commencing in the autumn.
- State of the art facilities for officers and staff, in an environmentally-friendly building.
- A town centre presence will be retained in a new facility in the town centre



**Cheshire
Police & Crime
Commissioner**

